

The Complete Solution

For Chart Recorders And Data Loggers.



Dickson.

Dickson Means Data.

And we mean business too. We know that products, processes, buildings, and every monitoring application is vital to your business. For that reason, Dickson has been designing and manufacturing reliable data logging devices for over 80 years and continues to do so today.

What Is A Calibration?

The most simple definition of calibration is the comparison of two measurements. In terms of your temperature and temperature/humidity monitoring equipment, calibration refers to confirming an instrument's stated accuracy by comparing it to a more accurate Standard and making any adjustments if necessary.

The calibration process involves exposing your instrument or its probe to extremely precise conditions and comparing the instrument's readings to the Standard's readings. This occurs in specially designed temperature and humidity chambers that allow us to achieve those precise conditions. If the instrument needs to be adjusted, the adjustments are made via specialized software not available outside of Dickson.

TABLE OF CONTENTS

Calibrations Explained
What is a Calibration? 2

Data Loggers
Report Logger 3
Temperature & Temperature Humidity Display Logger 4
Paperless Touchscreen Chart Recorder 5
Pro Series Data Loggers 6
Compact Data Loggers 7
WiZARD2 Wireless Logging System 8
Ethernet Loggers (WiZARD2 Compatible) 9
High Temperature Stainless Steel Loggers 10

Chart Recorders
8 Inch Temperature Chart Recorder 11
6 Inch Temperature Chart Recorder 11
8 Inch Temperature & Humidity Chart Recorder 12
6 Inch Temperature & Humidity Chart Recorder 13
4 Inch Temperature Chart Recorder 13
3 Inch Temperature Chart Recorder 14
Vaccine Chart Recorder 14
Voltage Chart Recorder 15
Disposable Chart Recorder 15

Thermometers & Indicators
Vaccine Alarm Thermometer 16
Temperature & Humidity Handheld Indicators 16
Infrared Temperature Thermometers 16

Pressure Monitors
8 Inch Pressure Chart Recorder 17
4 Inch Pressure Chart Recorder 17
Pressure Data Loggers 18

Featured Application
Smokehouses: Monitoring the Smoking Process 19

Compact-Sized Report Logger

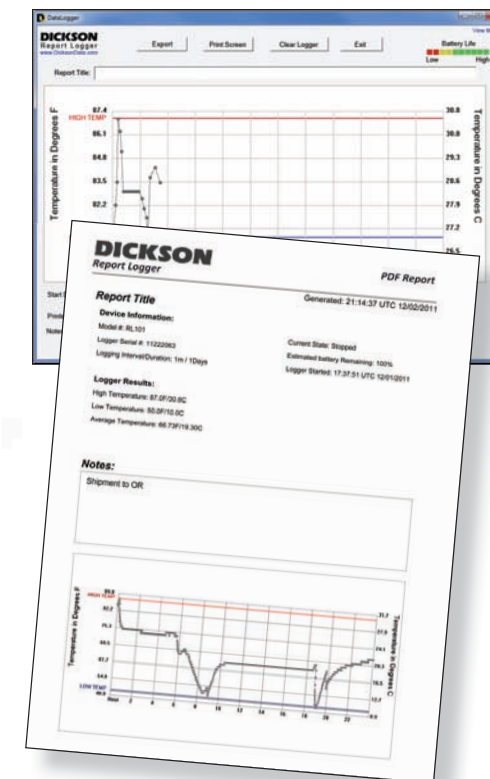
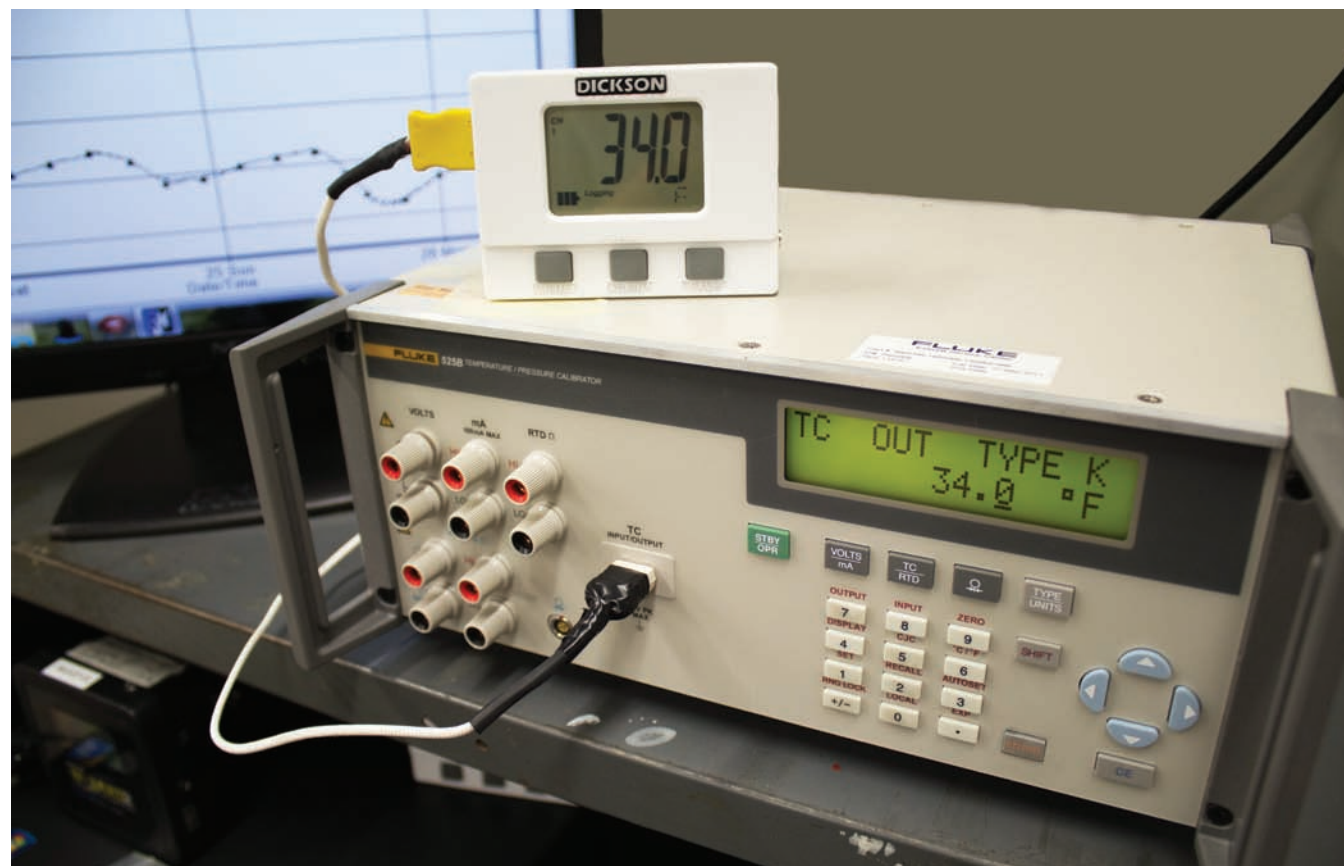
No Software!

\$49

- Features
- Reusable
 - Connects directly to your computer via USB
 - No cables

For an online product demonstration video, go to: www.DicksonData.com/RL

MODEL NUMBER	LOGGING PERIOD	SAMPLE RATE	OPERATING TEMPERATURE RANGE
RL101	1 Day	1 Minute	-40 to 176°F (-40 to 80°C)
RL103	3 Day	1 Minute	-20 to 176°F (-30 to 80°C)
RL107	7 Day	1 Minute	-4 to 176°F (-20 to 80°C)
RL110	10 Day	1 Minute	-4 to 176°F (-20 to 80°C)
RL120	20 Day	2 Minute	32 to 176°F (0 to 80°C)
RL140	40 Day	4 Minute	32 to 176°F (0 to 80°C)
RL175	75 Day	7 Minute	32 to 176°F (0 to 80°C)
RL190	90 Day	9 Minute	32 to 176°F (0 to 80°C)



Sample report generated by the compact-sized RL Report Loggers

Temperature Data Logger

- SM300 \$249** Range -4 to 158°F, -20 to 70°C. Accuracy ±0.8°F.
- SM320* \$299** Remote Probe. Range with Probe -300 to 2000°F. Accuracy ±1.8°F.
- SM325* \$399** Two Remote Probes. Range with Probe -300 to 2000°F. Accuracy ±1.8°F.
- SM420 \$499** Remote Probe. Range -50 to 350°F, -45 to 176°C. Accuracy ±0.5°F.



SM320 Temperature Model With Remote Probe

\$299 Add \$99 for 1-Point NIST

Temperature/Humidity Data Logger

- Industries & Applications
- Warehouses
 - Archives
 - Surgical Suites
 - Laboratories

- TM320 \$299** Range -4 to 158°F, -20 to 70°C. Accuracy ±0.8°F.
- TM325 \$399** Remote Probe. Range -40 to 185°F, -40 to 85°C. Accuracy ±0.8°F.



TM325 Temperature Model With Remote Probe

From **\$299** Add \$99 for 1-Point NIST

Not for use over 95% RH. Software required and sold separately. For software and other accessories, please call 800.323.2448 or visit www.DicksonData.com.
*Temp Range using standard K-TC probe: -300 +500°F (A203 probe required for +2000°F range).

Digital Graph Displays Trends

Full control at your fingertips!

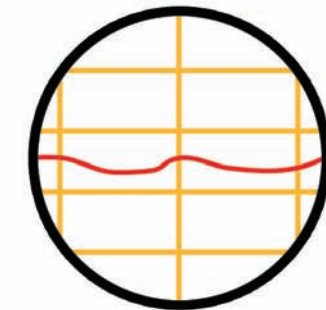
- Jumbo 4.1" x 5.5" touchscreen temperature and temperature/humidity logger
- Zoom and scroll at the touch of the screen
- Audible/visual alarms
- USB and FLASH card data download
- Rechargeable battery backup
- No running back to your PC to see data. Everything you need at the touch of a finger!



\$299 Add \$99 for 1-Point NIST

FT500

Standard View



View precise data for any excursions

MODEL	REMOTE PROBE	PROBE TYPE	TEMPERATURE RANGES	ACCURACY	RELAYS	PRICE
TEMPERATURE/HUMIDITY						
FH525	•		-40°F to 185°F	±0.8°F		\$459
FH535	•		-40°F to 185°F	±0.8°F	•	\$499
TEMPERATURE						
FT500			0 to 122°F	±1.2°F		\$299
FT525	•	Thermistor	-40°F to 300°F	±0.5°F		\$399
FT520	1	KT/C	-300°F to 2000°F	±1.8°F		\$339
FT530	2	KT/C	-300°F to 2000°F	±1.8°F	•	\$399
FT540	1	Thermistor/Glycol	-58°F to 158°F	±1.2°F		\$419
FT545	2	Thermistor/Glycol	-58°F to 158°F	±1.2°F		\$479

For more information, please visit www.DicksonData.com.

Temperature and Temperature/Humidity Data Logger

Start/Stop for precision reading!

- Features
- LCD display of current and MIN/MAX readings
 - High-speed USB connectivity
 - User-replaceable battery
 - Range -4 to 158°F

SP425 \$159 Temperature Logger. Digital Display. Accuracy ±1.2°F. Range -4 to 158°F.
TP425 \$249 Temperature and Humidity Logger. Digital Display. Accuracy ±0.8°F. Range -4 to 158°F.



SP425 Temperature Model

\$159 Add \$99 for 1-Point NIST



SP125

Temperature and Temperature/Humidity Data Logger

Great for shipping or moving!

- Features
- High/low alarm
 - High-speed USB connectivity
 - User-replaceable battery

SP125 \$119 Temperature Logger. Accuracy ±1.2°F. Range -10 to 176°F.
SP175 \$229 Temperature Logger with Thermocouple Probe. Accuracy ±1.8°F. Range -300 to 2000°F.
TP125 \$199 Temperature and Humidity Logger. Accuracy ±0.8°F. Range -10 to 176°F.

From \$119 Add \$99 for 1-Point NIST

Software required and sold separately. For software and other accessories, please call **800.323.2448** or visit **www.DicksonData.com**.
 *Temp Range using standard K-TC probe: -300 +500°F (A203 probe required for +2000°F range).

Compact-Sized Data Loggers

Ideal when space is a concern!

- Features
- USB connection
 - Economical 12-pack
 - Six month battery life
 - Ranges -4 to +158°F (-20 to +70°C)
 - Accuracy ±1.8°F (±1°C)

SK550 \$699 Temperature. Pack of twelve.

TK550 \$999 Temperature & Humidity. Pack of twelve.

Software required and sold separately. For software and other accessories, please call **800.323.2448** or visit **www.DicksonData.com**.



Dickson Is More Than Print!

Dickson has a growing collection of great videos on:

- Product Introductions and Overviews
- Application Showcases
- How To's

Check out all our videos at www.youtube.com/dicksondata



Product Highlights



Applications



Instructional

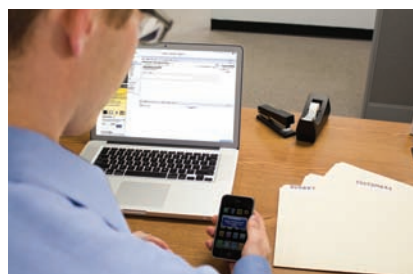


Have an idea for a video? Want us to highlight your application? Email marketing@dicksondata.com for details!

WIZARD2 Simple, scalable, wireless data logging.



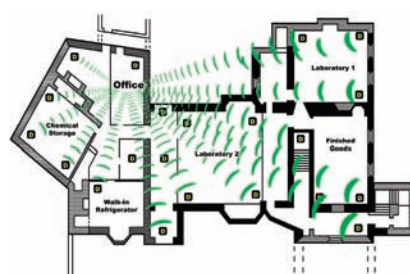
Systems Starting at
\$498



• **Text and Email Alerts**

Receive emails and/or text messages for:

- Excursions
- Low battery
- Lost communication
- Calibration due



• **Large Monitoring Network**

Create a large wireless network of loggers and add wired loggers when you have those hard to reach areas.



• **Data Comes To You**

No longer do you need to waste time running from logger to logger or building to building collecting all of your readings. Have all your data come back to one centralized computer and view the data across your network.

Ethernet Temperature Data Logger

Create a scalable monitoring network!

Features

- Email and Text alerts available
- Eliminates the need to change charts and pens
- Data automatically downloaded to your computer wirelessly
- Loggers continue to log in the event of a power outage

These loggers, while wired, are compatible with the WIZARD2 monitoring system and software. Use them in conjunction with your WIZARD2 system or without! They allow you to monitor locations that would have previously been cost prohibitive to monitor wirelessly.

\$399 Add \$99 for 1-Point NIST



WT540

Ethernet Temperature & Humidity Data Logger



WH545

\$399 Add \$99 for 1-Point NIST



To speak with a system specialist about an application, product, or other concern please call:

888.452.4626



Ready to build your system? Visit:

DicksonData.com/wizard

Stainless Steel Watertight Temperature Data Loggers

New generation of high temperature data logging!

Features

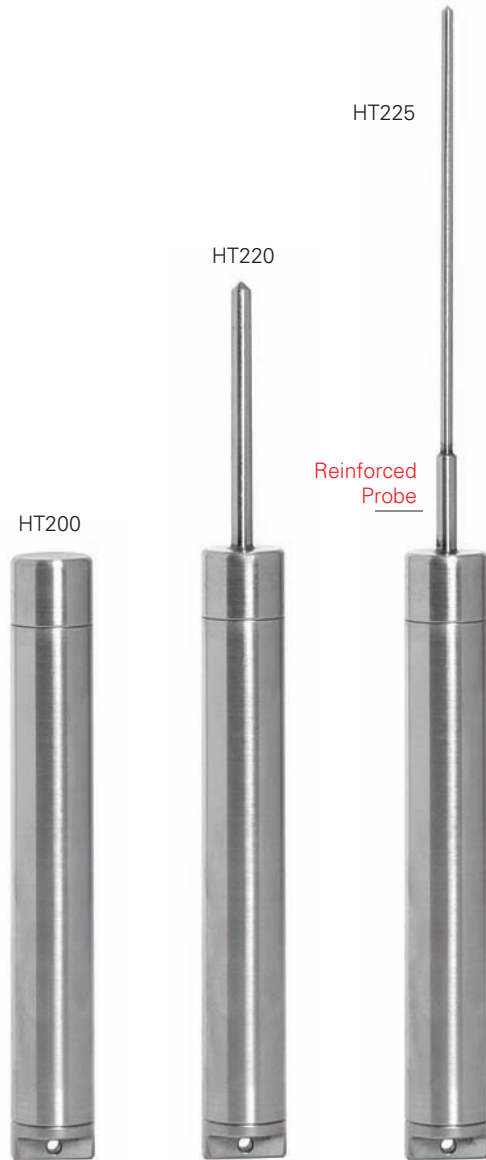
- User-replaceable battery
- USB download capability
- Reinforced probe on the HT225 to prevent breakages
- IP68 rating
- Range: -40 to 257°F

Prices Starting At

\$310 Add \$99 for 1-Point NIST

MODEL	LOGGER LG	LOGGER DIA	PROBE LG	PROBE DIA	PRICE
HT200	5.36"	0.75"			\$310
HT220	7.72"	0.75"	2.36"	0.19"	\$349
HT225	10.24"	0.75"	4.88"	0.11"	\$399

Software required and sold separately. For software and other accessories, please call 800.323.2448 or visit www.DicksonData.com.



8 Inch Temperature Chart Recorder

Easy-to-read chart lets you see temperature details, not just trends!

Industries & Applications

- Ovens
- Warehouses
- Food Processing
- Archives
- Laboratories
- Health - Blood storage, Dialysis Centers, Medical Centers

MODELS AND FEATURES

- KT800 \$399** Probe. Battery operated.
- KT802 \$459** Probe. Display.
- KT803 \$559** Probe. Display. Alarm.
- KT856 \$729** 2 Probes. Display. Alarm. Relays.

ALL MODELS HAVE THE FOLLOWING RANGES:

- 50 to +50°F/C • -20 to 20°F/C • 0 to 100°F/C
- 0 to 150°F/C • 0 to 250°F/C • 0 to 500°F/C
- 0 to 1000°F/C • 0 to 2000°F



KT803

6 Inch Temperature Chart Recorder

Easy-to-read chart lets you see temperature details, not just trends!

Industries & Applications

- Refrigerators
- Storage
- Clean Rooms
- Laboratories
- Pharmaceuticals
- Medical Equipment

MODELS AND FEATURES

- KT621 \$369** Probe.
- KT622 \$459** Probe. Display.
- KT625 \$599** Probe. Display. Alarm. Relays.

ALL MODELS HAVE THE FOLLOWING RANGES:

- 100 TO 0°F/C • -50 TO 0°F/C • -50 TO +50°F/C
- 0 TO 50°F/C • 0 TO 100°F/C • 50 TO 100°F/C
- 0 TO 250°F/C • 0 TO 500°F/C



KT622

Charts sold separately. For charts and accessories, please call 800.323.2448 or visit www.DicksonData.com.

8 Inch Temperature & Humidity Chart Recorder

Easy-to-read chart lets you see temperature and humidity details, not just trends!

Industries & Applications

- Pharmaceuticals
- Archives
- Laboratories & Clean Rooms
- Warehouses
- Health - Blood storage, Dialysis Centers, Medical Centers

MODELS AND FEATURES

- TH800 \$479** Battery operated.
- TH802 \$559** Display.
- TH803 \$669** Display. Alarm. Probe.
- TH805 \$729** Display. Alarm. Probe. Relays.

Not for use over 95% RH



TH803

Charts sold separately. For charts and accessories, please call 800.323.2448 or visit www.DicksonData.com.

RANGES	MODELS
32 to 120°F	TH800
0 to 50°C	TH800
-20 to 120°F	TH802, TH803, TH805
-20 to 50°C	TH802, TH803, TH805
40 to 110°F	TH802, TH803, TH805
5 to 40°C	TH802, TH803, TH805
0 to 185°F	TH803, TH805

Add an Optional Probe to your Temperature Unit!



D617 \$52 10' K-TC Straight Extension Cable



D605 \$73 4" Piercing Probe



D608 \$99 5" Immersion Probe



A203 \$125 6" High Temperature Immersion Probe

6 Inch Temperature & Humidity Chart Recorder

Easy-to-read chart lets you see temperature details, not just trends!

Industries & Applications

- Ovens
- Warehouses
- Food Processing
- Archives
- Laboratories
- Health - Blood storage, Dialysis Centers, Medical Centers

MODELS AND FEATURES

- TH621 \$479** Probe.
- TH622 \$559** Display.
- TH623 \$669** Probe. Display. Alarm.

ALL MODELS HAVE THE FOLLOWING RANGES:

32 to 100°F • 0 to 50°C



TH623

Charts sold separately. For charts and accessories, please call 800.323.2448 or visit www.DicksonData.com.

4 Inch Temperature Chart Recorder

Designed with simplicity in mind!

Easy-to-use, battery operated and portable

- Digital display
- 24 hour / 7 day recording time
- Wall mount
- Battery door
- Hinged door

Applications

- Refrigerators
- Warehouses
- Freezers
- Laboratories



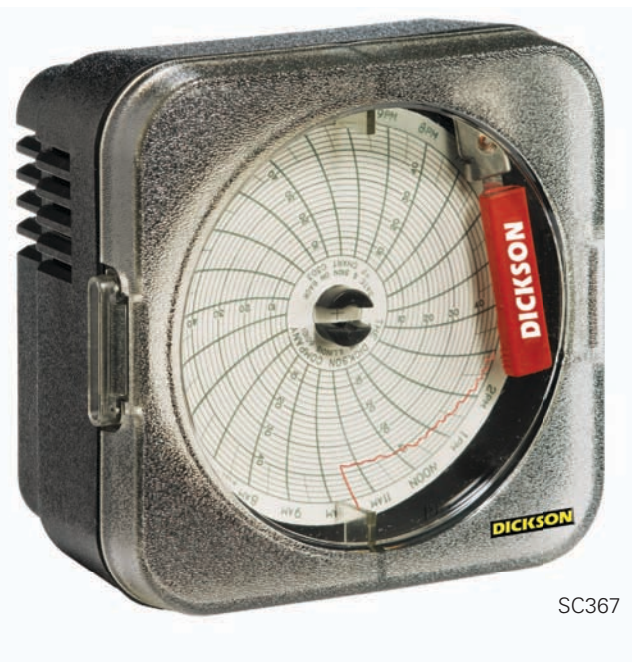
\$239 Add \$99 for 1-Point NIST



SL4100 Temperature Model

Charts sold separately. For charts and accessories, please call 800.323.2448 or visit www.DicksonData.com.

MODEL	DIGITAL DISPLAY	TEMPERATURE RANGES	PRICE
SL4350	•	-22 to 122°F • -30 to 50°C	\$239
SL4100	•	0 to 100°F • -18 to 37°C	\$239
SL490	•	45 to 90°F • 7 to 32°C	\$239
SK4350		-22 to 122°F • -30 to 50°C	\$239
SK4100		0 to 100°F • -18 to 37°C	\$239



SC367

3 Inch Mini Temperature Chart Recorder

Ideal when space is a concern!

- Applications
- Refrigerators
 - Clean Rooms
 - Transportation
 - Storage

\$219 Add \$99 for 1-Point NIST

MODEL	TEMPERATURE RANGES	PRICE
SC367	-14 to 32°F • -25 to 0°C	\$219
SC377	4 to 50°F • -15 to 10°C	\$219
SC386	22 to 68°F • -5 to 20°C	\$219
SC387	50 to 96°F • 10 to 35°C	\$219
SC397	76 to 122°F • 25 to 50°C	\$219

Charts sold separately. For charts and accessories, please call 800.323.2448 or visit www.DicksonData.com.



VFC70

Vaccine Chart Recorder

VFC70

- Features
- Easy-to-read special vaccine chart with circular bands highlighting the acceptable vaccine ranges of 35-46°F, 2-8°C
 - LCD display shows current temperature for quick reference
 - Fahrenheit/Celsius Selectable

\$259 Add \$99 for 1-Point NIST

Charts sold separately. For charts and accessories please call 800.323.2448 or visit www.DicksonData.com.



ET855

Voltage Chart Recorder

ET855

- Features
- Audible/visual alarm
 - Large digital display
 - Two screw terminal connectors on the back of the instrument for easy connection of the input transmitter

\$649

CHART RANGE	7-DAY CHART	24-HR CHART	31-DAY CHART
0 to +100	C412	C410	C409
0 to +1000	C440	C441	
0 to +200	C436	C456	
0 to +14	C453	C457	
0 to +150	C435	C425	
0 to +300	C431	C422	
-10 to +10	C405	C495	
-150 to +250	C452	C442	

Charts sold separately. For charts and accessories, please call 800.323.2448 or visit www.DicksonData.com.



Disposable Recorder

One-time use! This disposable temperature recorder is perfect for monitoring goods while in transit.

- Multiple features tailored for shipping needs:
- Failsafe start-up and pull out start tab
 - Tamper-proof crimped seal
 - Shock and vibration protection
 - Low cost shipping alternative

\$39 Each

D301

MODEL	TEMPERATURE RANGES	RECORDING TIME
D301	-20 to 100°F • -30 to 37.5°C	10 Day
D302	-20 to 100°F • -30 to 37.5°C	20 Day
D307	-20 to 100°F • -30 to 37.5°C	40 Day
D309	-20 to 100°F • -30 to 37.5°C	75 Day

Vaccine Alarm Thermometer

MM120/125

Features

- LCD display shows current temperature, MIN/MAX temperatures, uses visual alert when in alarm mode and battery level indicator
- High/Low alarms
- Temperature range -58 to ±122°F (-50 to 50°C)

MM120 \$49 One Probe.

MM125 \$59 Two Probes.

\$59 Add \$99 for 1-Point NIST



MM125 Two Probe Temperature Indicator



TC200



TH300



D182 Infrared



D186 Infrared

Indicators

Quickest readings!

Available Features

- Digital display
- Infrared (IR)
- Stores and recalls 16 readings
- Hold button stores readings for later recall
- K-thermocouple probe

MODEL	TEMPERATURE RANGES	PRICE
TEMPERATURE		
D182	-76 to +932°F	\$60
D186	-67 to 536°F	\$99
TC200	-300 to +2000°F	\$299
TEMPERATURE/HUMIDITY		
TH300	-22 to +185°F • -30 to 185°C	\$399

Add \$99 for 1-Point NIST

8 Inch Pressure Chart Recorder

Large, easy-to-read chart!

Features

- Rugged low-maintenance design features
- Single AA battery power
- Corrosion-resistant case
- 7-day or 24-hour operation
- Keyhole slot for wall mount
- Splashproof case with an IP rating of 66
- 1/4 inch NPT Connector

PW860 \$599 7-day. 0 to 100 PSI.

PW861 \$599 24-hour. 0 to 100 PSI.

PW864 \$599 7-day. 0 to 200 PSI.

PW865 \$599 24-hour. 0 to 200 PSI.

PW866 \$599 7-day. 0 to 300 PSI.

PW867 \$599 24-hour. 0 to 300 PSI.

PW875 \$749 24-hour. 0 to 1000 PSI.

\$599 Add \$99 for 1-Point NIST



PW875



4 Inch Pressure Chart Recorder

Compact and durable design!

Features

- Operates up to one full year on a single AA battery
- 1/4 inch NPT connection
- For applications where splashproof IP rating is not required
- 7-day or 24-hour selectable

PW470 \$449 0 to 100 PSI.

PW474 \$449 0 to 200 PSI.

PW476 \$449 0 to 300 PSI.

PW479 \$449 0 to 500 PSI.

\$449 Add \$99 for 1-Point NIST



PW470

Charts sold separately. For charts and accessories, please call 800.323.2448 or visit www.DicksonData.com.

Pressure Data Logger

User-friendly features!

- One-second sampling rate
- User-replaceable battery
- Pressure sensor includes built-in diaphragm seal
- Display, USB connectivity, FLASH memory downloads
- IP68 case
- Delayed start - start logging once unit is in place

- A. Digital display
- B. USB
- C. FLASH memory card
- D. Battery
- E. Splashproof case

PR125 \$499 Range 0 to 100 PSI.
 PR325 \$499 Range 0 to 300 PSI.
 PR525 \$599 Range 0 to 500 PSI.

\$499 Add \$99 for 1-Point NIST



PR325



Rugged Utility Pressure Data Logger

Compact and discreet!

This data logger fits in toolboxes, tight corners or in wide open spaces without attracting attention. Built for real-world water and gas pressure monitoring.

- Water resistant case
- 3 year battery
- Unobtrusive design
- Fits easily in a toolbox
- Pressure sensor includes built in diaphragm seal.

PR100 \$449 0-100 PSI
 PR300 \$449 0-300 PSI

\$499 Add \$99 for 1-Point NIST



Software required and sold separately. For more information, please visit www.DicksonData.com.

Featured Application: Smokehouses

Smokehouses utilize a number of temperature and temperature/humidity devices. The process begins in the brining stage where the product being smoked (fish, meat, etc) is allowed to soak for extended periods of time. During the brining stage the solutions are stored in a refrigerator and monitored.

After the brining is complete, the product moves into the ovens where they must reach a certain temperature as required by the FDA. You can monitor the product directly by using a probed logger placed into the meat and monitor the oven with an additional probe running into the oven itself.

Once the actual smoking in the ovens is completed, the product is cooled and stored in a temperature controlled area to ensure the product remains safe.

The HT225

The HT225 is perfect for the smoking process.

- Long piercing probe great for recording inner temperature of meat
- Stainless steel case is easy to clean
- Safe for food applications



See Page 10 for more details.

* Other Great Products for this Application
 SM320 (Page 4) and FT520 (Page 5)

DICKSON

Dickson
930 South Westwood Avenue
Addison, Illinois 60101-4917

800 323 2448 tel
800 676 0498 fax
www.DicksonData.com

PRSRT. STD.
U.S. Postage
PAID
The Dickson
Company

WE'RE READY TO TAKE YOUR ORDER!

1-800-323-2448 or online at www.DicksonData.com



Application Focus: Smokehouses

- Monitor throughout the entire smoking process
- Stainless steel body great for food applications

See Page 19 for case study



PR325

3 Ways to Order

1

Online at www.DicksonData.com

2

Call 1-800-323-2448 or 1-630-543-3747 and speak to a Customer Service Representative

3

Fax to 1-800-676-0498 or 1-630-543-0498

All prices are subject to change without notice. In the event of a printing error, Dickson reserves the right to charge the correct price.
All shipments ship 2nd day unless otherwise requested.

* How to Use QR Codes



Quick Response (QR) codes are a type of barcode that can be read by cell phones and other readers. Simply download a QR Reader application on your cell phone (we like i-nigma, but there are many others), scan the code, and view additional content like detailed information or product videos! For more information visit www.DicksonData.com/qr